

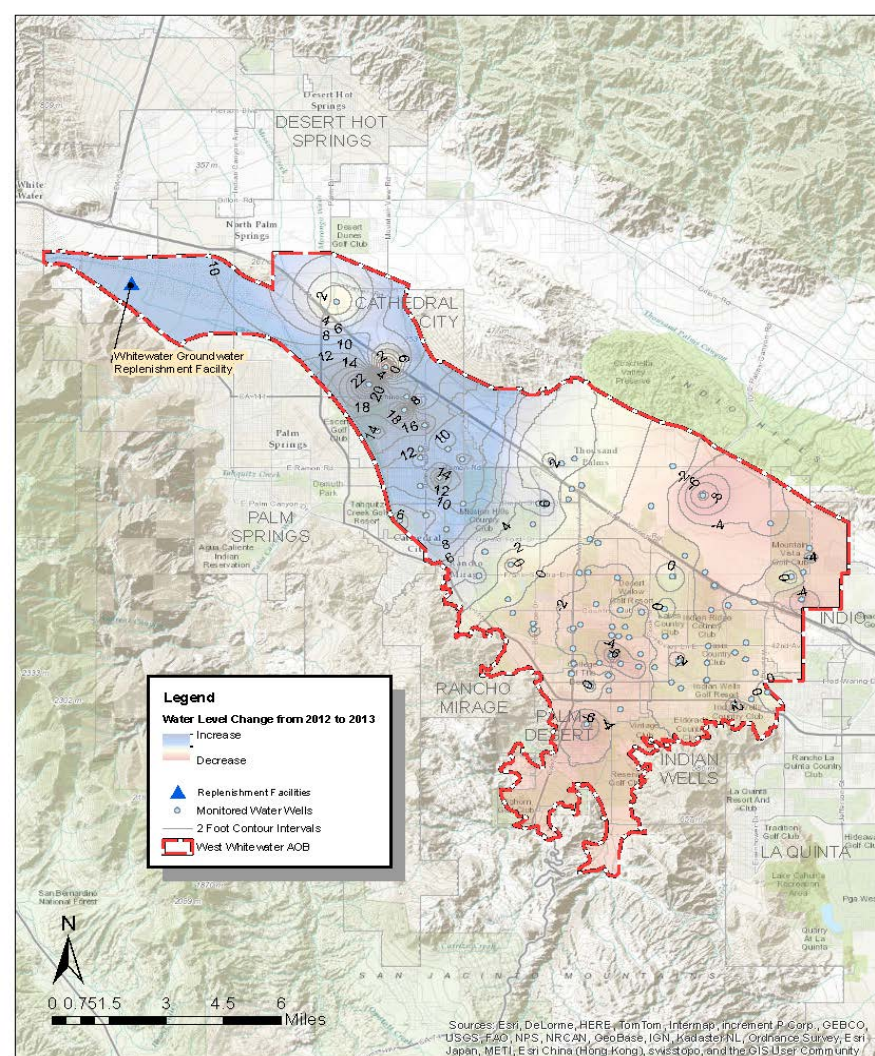
Engineer's Reports on Water Supply and Replenishment Assessment 2014-2015





West Whitewater River Subbasin Area of Benefit (AOB)

West Whitewater River AOB Groundwater Level Change from 2012 to 2013



West Whitewater River Subbasin AOB Deliveries

Year	Acre-feet
2002	33,435
2003	902
2004	13,244
2005	165,554
2006	98,959
2007	16,009
2008	8,008
2009	57,024
2010	228,330
2011	232,214
2012	257,267
2013	26,619
Total (1973-2013)	2,884,110

West Whitewater River Subbasin AOB Production

Year	CVWD AOB Acre-feet	DWA AOB Acre-feet	Stream Diversions Acre-feet	Total Acre-feet
2002	163,185	46,004	4,221	213,410
2003	156,185	43,463	4,627	204,275
2004	159,849	48,093	4,758	212,700
2005	153,462	46,080	4,799	204,341
2006	160,239	48,967	4,644	213,850
2007	157,487	50,037	3,490	211,014
2008	161,695	45,405	3,593	210,693
2009	155,793	41,913	1,443	199,149
2010	141,481	39,352	1,582	182,415
2011	141,028	40,071	1,724	182,823
2012	141,379	39,507	2,222	183,108
2013	143,108	37,730	1,156	181,994

Annual Water Balance (Acre-feet)

West Whitewater River Subbasin AOB

	2012	2013
Production	-183,108	-181,994
Non-consumptive Return	64,088	63,698
Natural Inflow	36,000	36,000
Natural Outflow	-7,000	-7,000
Groundwater Recharge	257,267	26,620
ANNUAL BALANCE	167,247	-62,676

West Whitewater River Subbasin AOB Groundwater Replenishment Program Income Statement

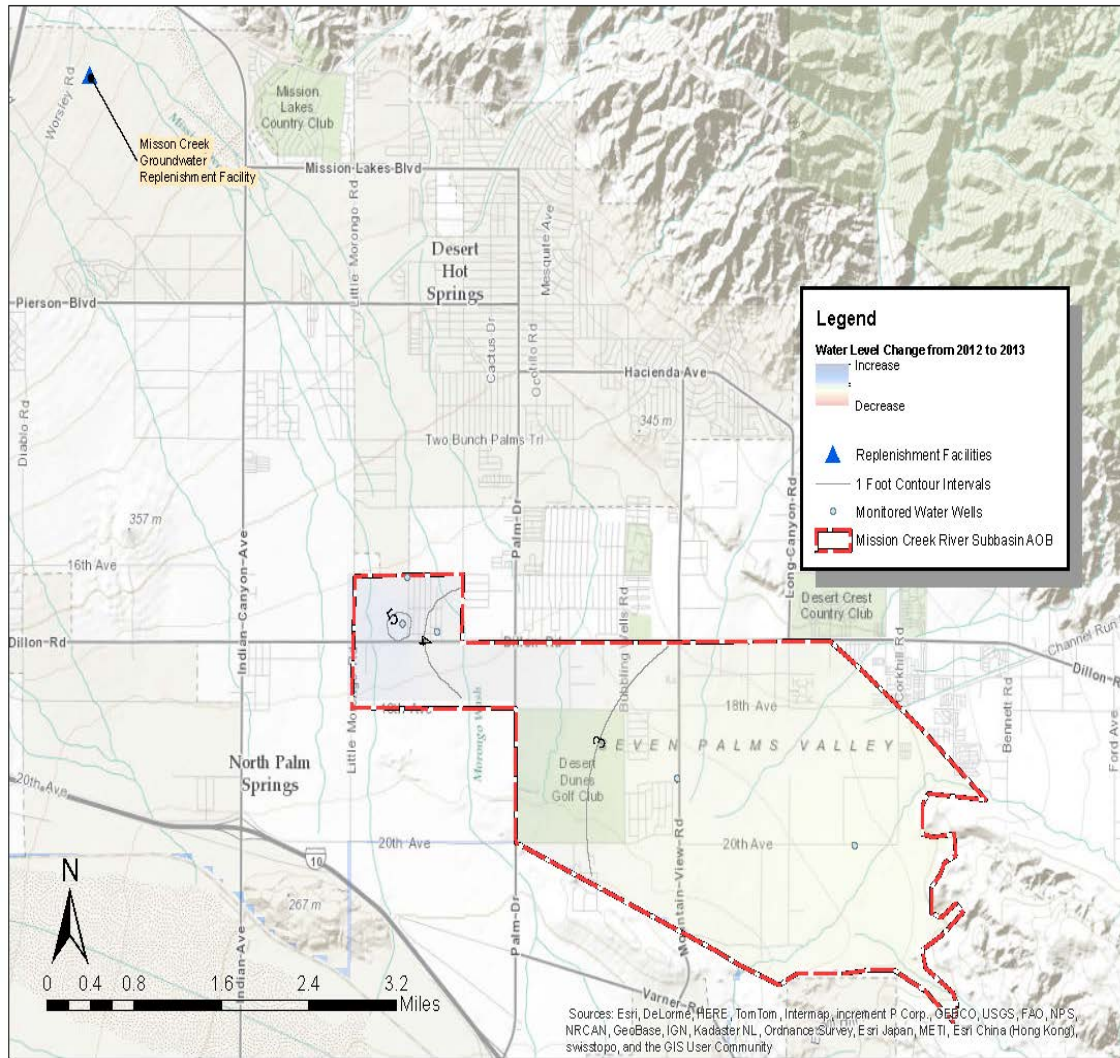
Projected FY 2015 Revenue	\$58,807,000
Projected FY 2015 Expenses	\$69,738,000 ⁽¹⁾
Projected FY 2015 Cash Flow	\$-10,891,000
Projected FY 2015 Reserve Balance	\$58,832,000
RAC effective 7/1/12 remains same - No Increase	\$110.26/AF

(1) Excluding depreciation



Mission Creek Subbasin Area of Benefit (AOB)

Mission Creek Subbasin AOB Groundwater Level Change from 2012 to 2013



Mission Creek Subbasin Deliveries

Year	Acre-feet
2002	4,733
2003	59
2004	5,564
2005	24,723
2006	19,901
2007	1,011
2008	503
2009	4,090
2010	33,210
2011	26,238
2012	23,406
2013	2,379
Total (2002-2013)	145,683

Mission Creek Subbasin Production

Year	CVWD AOB Acre-feet	DWA AOB Acre-feet	Total Acre-feet
2002	4,371	9,597	13,968
2003	4,425	10,073	14,498
2004	4,628	11,920	16,548
2005	4,247	12,080	16,327
2006	4,757	12,608	17,365
2007	4,547	11,862	16,409
2008	4,543	11,232	15,775
2009	4,813	10,295	15,108
2010	4,484	9,820	14,304
2011	4,653	9,550	14,203
2012	4,582	9,493	14,075
2013	4,415	10,080	14,495

Annual Water Balance (Acre-feet)

Mission Creek Subbasin

	2012	2013
Groundwater Production	-14,075	-14,495
Non-consumptive Return	4,926	5,073
Natural Inflow	5,000	9,340
Natural Outflow	-2,000	-6,000
Groundwater Recharge	23,406	2,379
ANNUAL BALANCE	17,257	-3,703

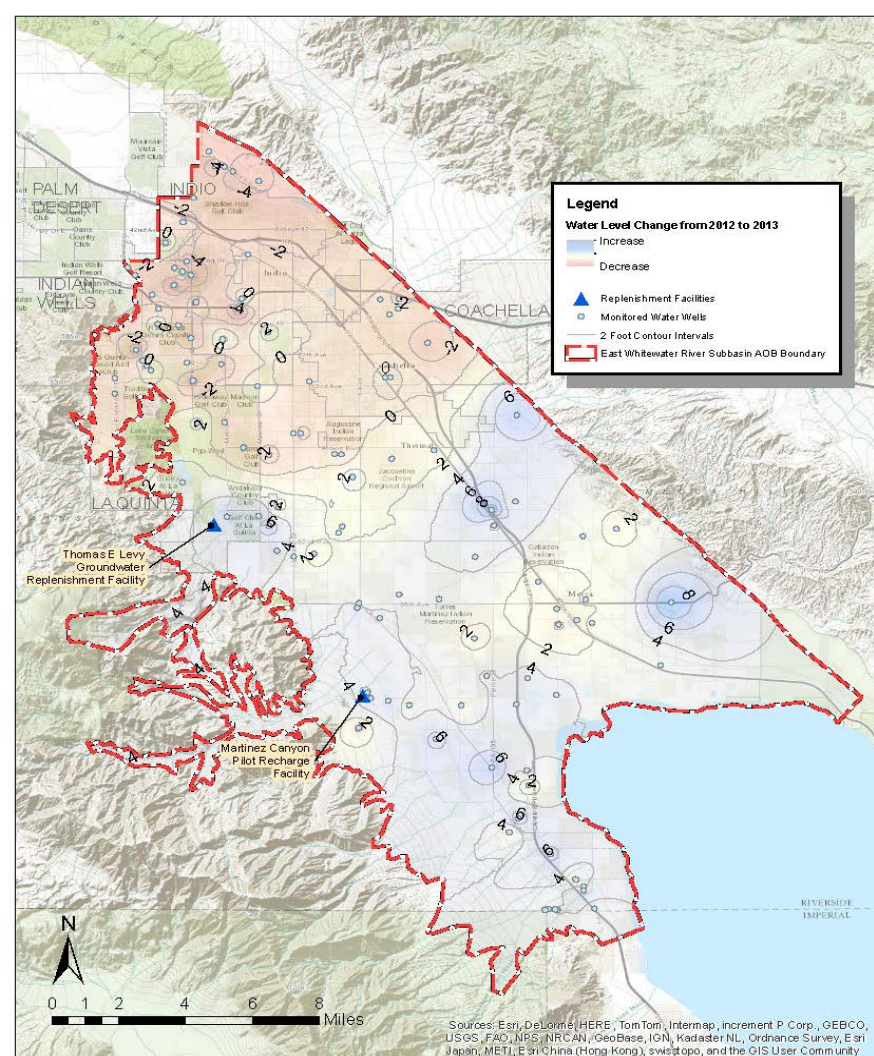
Mission Creek Subbasin AOB Groundwater Replenishment Program Income Statement

Projected FY 2015 Revenue	\$2,515,000
Projected FY 2015 Expenses	\$3,678,000
Projected FY 2015 Cash Flow	\$-1,090,000
Projected FY 2015 Reserve Balance	\$2,448,000
RAC effective 7/1/11 remains same - No Increase	\$98.73/AF



East Whitewater River Subbasin Area of Benefit (AOB)

East Whitewater River Subbasin AOB Groundwater Level Change from 2012 to 2013



East Whitewater River Subbasin AOB Deliveries

Year	Acre-feet
2002	2,360
2003	1,671
2004	3,450
2005	4,743
2006	2,648
2007	5,775
2008	7,473
2009	21,735
2010	37,401
2011	32,417
2012	33,166
2013	35,192
Total (1997-2013)	197,997

East Whitewater River Subbasin AOB Production

Year	Acre-feet
2002	166,700
2003	199,800
2004	172,300
2005	172,000
2006	172,000
2007	172,000
2008	172,000
2009	160,000
2010	150,000
2011	145,000
2012	120,064
2013	119,194

Annual Water Balance (Acre-feet)

East Whitewater River Subbasin AOB

	2012	2013
Groundwater Production	-120,064	-119,194
Non-consumptive Return	139,203	137,324
Natural Inflow	28,000	28,000
Flows to Drains (subsurface drainage)	-72,106	-77,686
Groundwater Recharge	33,166	35,192
ANNUAL BALANCE	8,199	3,636

East Whitewater River Subbasin AOB Groundwater Replenishment Program Income Statement

Projected FY 2015 Revenue	\$13,997,000
Projected FY 2015 Expenses	\$12,171,000 ⁽¹⁾
Projected FY 2015 Cash Flow	\$2,226,000
Projected FY 2015 Reserve Balance	\$-4,044,000
Recommended \$7/AF RAC increase	\$52/AF

(1) Excluding depreciation



Questions?