

Fact Sheet

Coachella Valley Salt and Nutrient Management Plan

What is a Salt and Nutrient Management Plan (SNMP)?

SNMPs are mandated by the State of California's Recycled Water Policy, adopted in 2009. The Policy encourages the use of recycled water from municipal wastewater sources as it becomes an increasingly important source of water for California. The concern, however, is that recycled water, and other sources of water, contain salts and nutrients that must be managed to protect the water quality of the state's groundwater basins. For this reason, the Policy requires the development of SNMPs to evaluate current and future projects and ensure basins are managed with appropriate consideration of water quality.

What are the objectives of the SNMP?

SNMPs are intended to provide the foundation for basin-wide or watershed-wide management of water resources concerned with the attainment of water quality objectives and the protection/augmentation of long-term water resources.

The regulatory objectives of the SNMP are to:

- Protect beneficial uses
- Protect human health
- Provide a tool to evaluate future projects

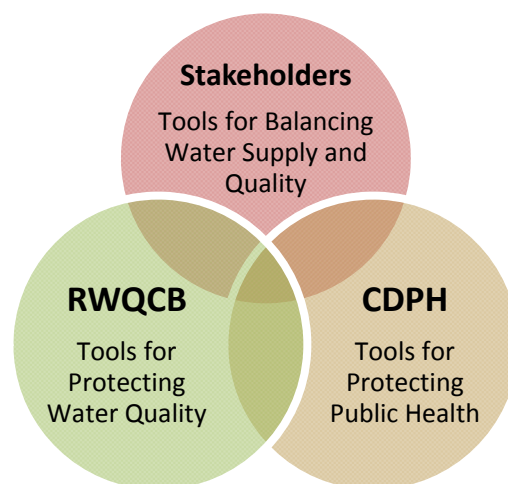
What is the SNMP relationship to stakeholders?

- Regulatory Changes:
 - May result in Basin Plan amendment
 - May change water quality objectives, implementation plans, and monitoring requirements
 - May impact waste discharge requirements
- Potential increase in cost of water if treatment is required to meet water quality objectives

...local water and wastewater entities, together with local salt/nutrient contributing stakeholders, will fund locally driven and controlled, collaborative processes open to all stakeholders...

State Water Resources Control Board,
Recycled Water Policy (2009)

The SNMP provides...



adapted from watereuse.org

How can you help?

We need your input! The SNMP is a stakeholder-driven process. In order for the SNMP to be successful, it must meet stakeholder expectations by considering input regarding:

- Groundwater quality data
- Water quality goals
- Prioritization of those goals
- Projects that may impact salt or nutrients on the Valley
- Management methods

We appreciate all your valuable feedback.

Patti Reyes, P.E.,
Coachella Valley Water District
(760)398-2661, ext. 2270 | preyes@cvwd.org